



STUDENT ACCOMMODATION
LISBOA

LIVENSA





LIKE
HOME,
ONLY
BETTER

Looking for an unforgettable college experience?

Look no further! Livensa Living is the place where you dream to live.

Can you imagine waking up in the morning and preparing breakfast in your studio

Taking a shower without having to queue?

Having a library where you can study and end the day swimming in the pool?

Stop imagining!

Come live with us and share all these experiences with your housemates.

Here you will find a multicultural family and unique facilities for you to live comfortably, in safety and tranquility.





COMFORT

Our studios and common areas were designed for you to be as comfortable as possible wherever you choose to study or socialize.

Your well-being is our mission, that's why we want you to live **like home... only better.**



SAFETY

Safety is our main priority! All residences are equipped with **video surveillance** systems and **electronic access control**.

Our reception team is at the residence **day and night, 365 days a year**.



LOCATION

We choose our locations close to the main universities and nearby public transport network for you to freely enjoy your student life.

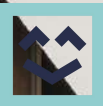


COMMUNITY

Our team prepares the best events to make you feel at home, only better.

Cinema sessions, group sport classes, creativity workshops...and, of course, you can't miss our themed parties!

You won't want to leave Livensa Living!



STAFF

At Livensa, our team is always available to help you with whatever you need.

Besides you can count on them to give you great tips about the city and the residence.

Our goal is for you to create great memories here and live an unforgettable experience with us.
You'll always be welcomed with a big smile!



STUDIOS

SINGLE & TWIN

In our residences you will find single studios and in some also twins and all of them fully equipped to make your experience unforgettable

Living with your friends has never been so easy!

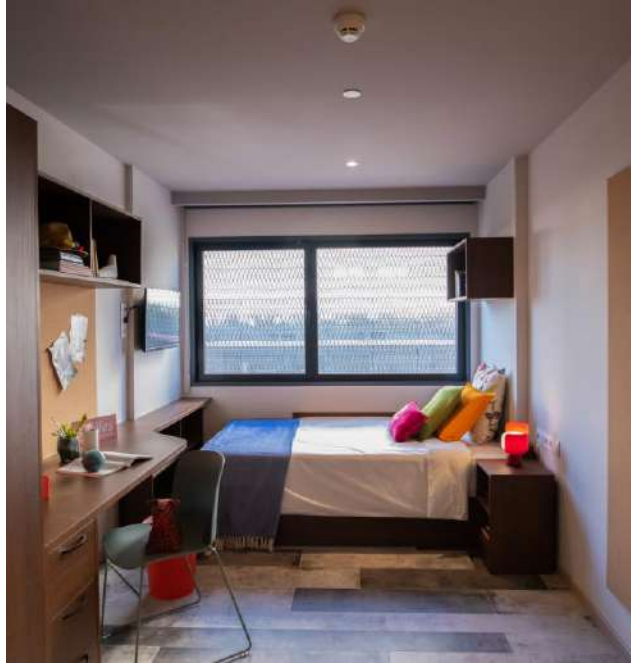


ALL INCLUDED

Living away from home may be a challenge, but at Livensa Living we make your life easier!

All our prices include electricity, water, internet, and the use of all facilities!

STUDIOS



At Livensa Living residences you will find twin and single studios fully equipped with a kitchen and a private bathroom .

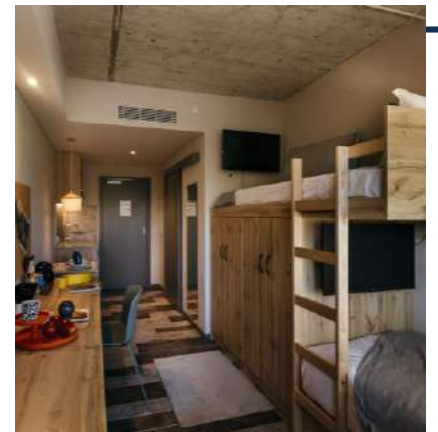
All rooms include:

- Individually adjustable air conditioning (hot and cold).
- Private kitchen:
 - Fully equipped (induction hobs, oven, microwave, extractor hood, fridge with freezer and sink) or kitchenette (combined oven microwave, fridge with freezer and sink).
- Private bathroom.
- TV.
- 120 in singles or 90 cm in twins wide bed with high quality mattress and storage space.
- Wardrobe.
- Desk and study area.
- Dining area.
- Traditional and USB plugs.

* Kitchenware not included

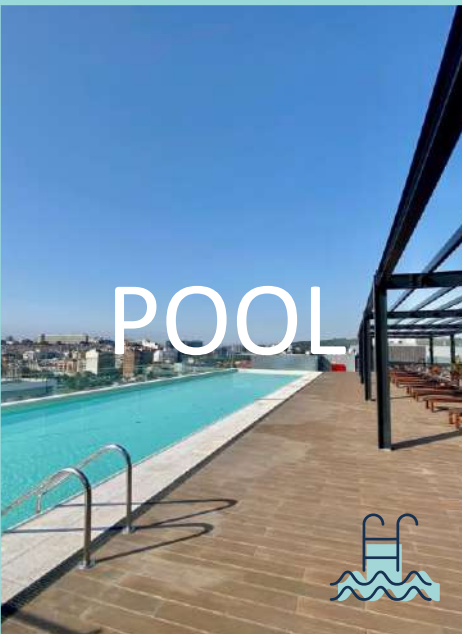


TWINS





OUR FACILITIES



POOL



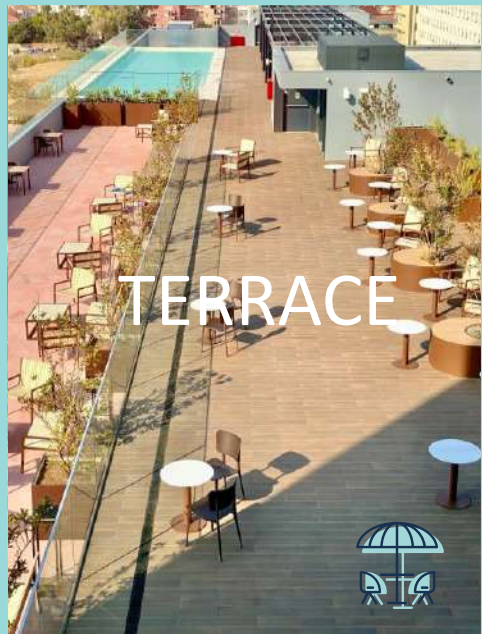
GYM



LIBRARY



GAMES
AREA



TERRACE



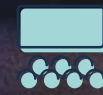
PRIVATE
DINING
ROOMS



COMMON
KITCHEN



CINEMA
& MULTIMEDIA
ROOM



CLIMBING
WALL



PARKING



*Only Lisboa Cidade Universitaria

*Only Lisboa Cidade Universitaria



At Livensa we have a complete program of **volunteer activities** that will help you make new friends from the very first moment.

Our Student Life program organizes events in the residences throughout the year to make the best of your stay at Livensa.

Come to live to Livensa and get great memories, experiences and more friends!

Also, you will have **all the necessary services** to make your day by day much easier and letting you to focus on your studies and **enjoy this new experience.**





OUR SERVICES

RECEPTION
24H



WIFI
HIGH-SPEED



VIDEO
SURVEILLANCE



ELECTRONIC
ACCESS
CONTROL



SELF-SERVICE
LAUNDRY



MAINTENANCE



VENDING
MACHINE



DAILY
COMMON
AREA
CLEANING



PARCEL
COLLECTION



COPYING
&
PRINTING





PALABRA DEL RESIDENTE



BORIS · 22 AÑOS · FRANCIA

A SPACE WHERE YOU FEEL AT HOME AND WHERE YOU CAN LIVE AND STUDY WITH TRANQUILLITY



WHAT OUR RESIDENTS SAY



LOGO

GIORGIO · 19 YEARS · ITALY

LIVENSA IS LIKE A SECOND HOME TO ME.



What our liversers say?

PALABRA DEL RESIDENTE



ELISA · 20 AÑOS · ITALIA

STAFF AT LIVENSA ARE VERY SUPPORTIVE AND I FEEL SUPER SAFE HERE.

PALABRA DEL RESIDENTE



INGRID · 22 AÑOS · ESPAÑA

LIVENSA IS LIKE A SECOND HOME. I FELT IT SINCE MY FIRST DAY HERE.

PALABRA DEL RESIDENTE



PEDRO · 18 AÑOS · PORTUGAL

LIVENSA STAFF WORKS LIKE A TEAM SO THAT YOU CAN FEEL COMFORTABLE AND AT HOME.

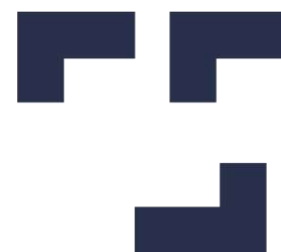
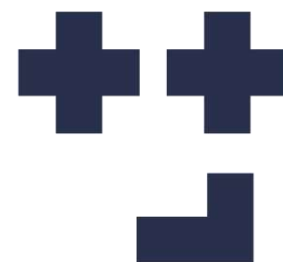


PALABRA DEL RESIDENTE



THALES · 22 AÑOS · BRASIL

I CHOSE LIVENSA FOR THE POSSIBILITY OF NETWORKING AND TO LEARN NEW LANGUAGES.

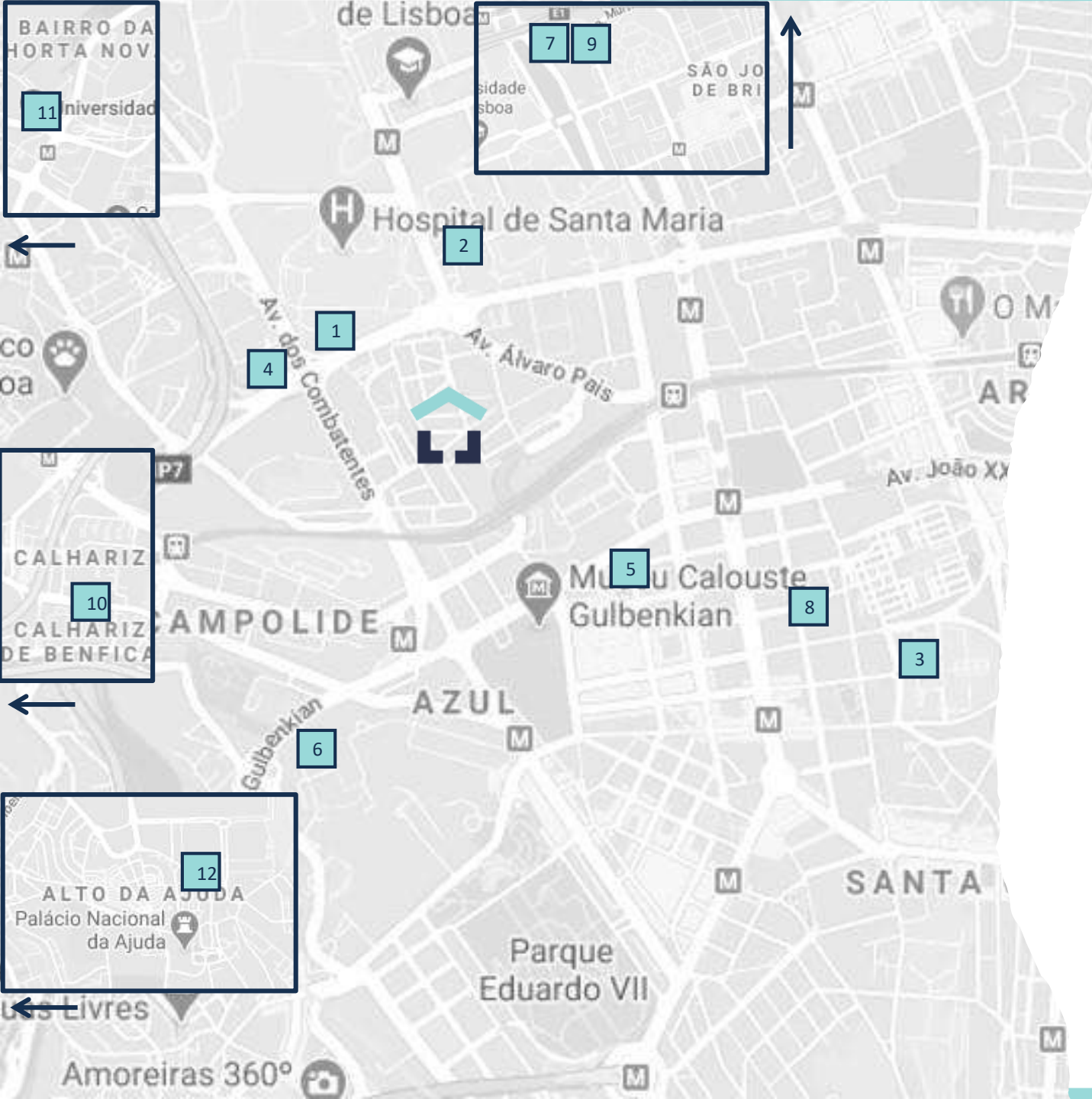


PALABRA DEL RESIDENTE



JENNA · 19 AÑOS · EGIPTO

IT'S EASY TO STUDY AT THE LIBRARY AS THE SUN IS ALWAYS SHINING. ALSO, THE GYM MOTIVATES ME TO EXERCISE



Location

Lisboa Cidade Universitária

- 1 UL - 1,2 km
(Medicina, Direito, Letras, Psicologia, Dentária, Farmácia)
- 1 ISCTE – 1,0 km
- 2 Técnico - 2,4 km
- 3 UCP - 1,7 km
- 4 NOVA FCSH - 1,0 km
- 5 NOVA (Campolide) - 2,0 km (IMS, Direito)
- 6 LUSÓFONA - 2,0 km
- 7 ISCAL - 1,4 km
- 8 ISG - 2,2 km
- 9 IPL - 4,5 km (ESCS / ESEL / ESML)
- 10 EUROPEIA - 4,5 km
- 11 UL (Ajuda) - 6,0 km (Veterinária, Arquitetura, ISCSP)



Location

Lisboa Cidade Universitária

Public Transport

Metro Station “Entrecampos”: 450 m

Train Station “Entrecampos”: 450 m

Bus stop: 200m

Shopping Around

Campo Pequeno: 700m

- Supermarket
- Food Court
- Stores

Other supermarkets

- Lidl: 450 m (Entrecampos station)
- Continente Bom dia: 850 m

Points of interest

Zoo: 2,5 km

Monsanto: 6 km

Meo Arena (concerts): 9 km

Algés Sea Walk: 13 km

Carcavelos Beach: 17 km

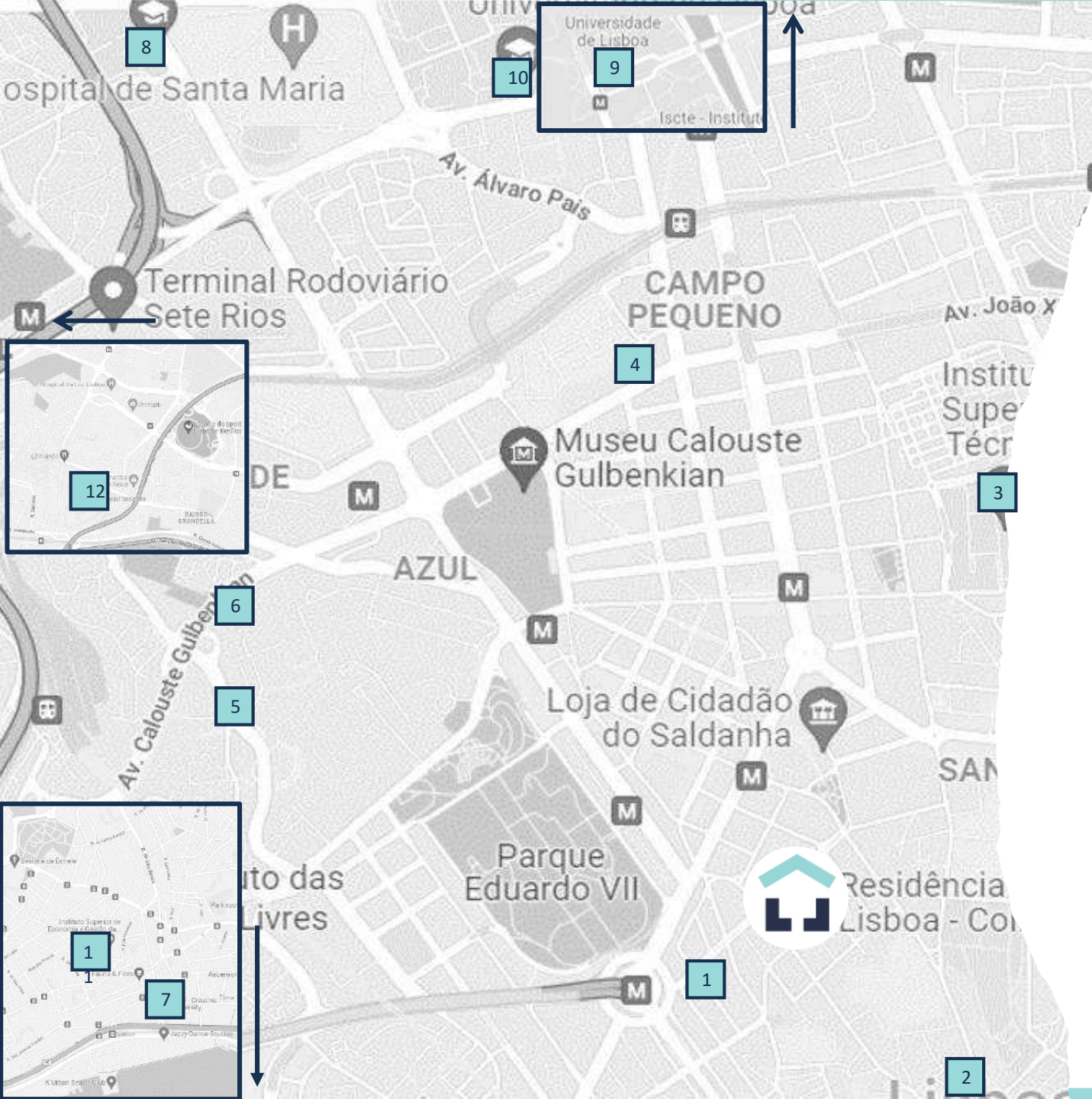
Services

St. Maria hospital: 1,3 km

Pharmacy: 550 m

Police Station: 1 km

Lisbon Airport : 5 km



Location

Lisboa Marquês de Pombal

- 1 Universidade Autónoma - 900 m
- 2 Faculdade de Ciências Médicas (NOVA Medical School) - 900 m)
- 3 Técnico (IST) - 1,6 Km
- 4 NOVA FCSH - 1,9 Km
- 5 NOVA IMS - 2,1 Km
- 6 NOVA School of Law - 2,2 Km
- 7 IADE Creative University - 2,9 Km
- 8 Universidade Católica (UCP) - 3,2 Km
- 9 Universidade de Lisboa (UL) - 3,5 Km
- 10 ISCTE - IUL- 3,2 Km
- 11 ISEG - 3,2 Km
- 12 Inst. Politéc. de Lisboa (IPL) – 5,7 Km



Location

Lisboa Marquês de Pombal

Public Transport

Bus stop: At the door

Metro “Marquês de Pombal”: 5 min walking

Metro “Picoas”: 7 min walking

Train/Bus station “Sete Rios”: 12 min de carro

Services

Hospital S. António: 2,0 km

Police station: 3,0 km

Francisco Sá Carneiro Airport : 11,8 km

Shopping around

Supermarket “Continente Bom Dia”:
3 min walking

El Corte Inglés: 12 min walking

- Supermarket
- Shops
- Food Court

Points of interest

Eduardo VII Park: 10 min walking

Gulbenkian Garden: 20 min walking

Baixa-Chiado / Bairro Alto: 9 min by metro

São Jorge Castel: 14 min by car



LIVENSA LIVING PROJECT

The Livensa Living student residence is part of a global project from several locations in Spain and Portugal, offering exceptional quality accommodation for students at affordable prices in the main university cities.

Spain

- Barcelona
- Granada
- Málaga
- Donostia-San Sebastián
- Madrid
- Valencia
- Salamanca
- Pamplona
- Bilbao
- Sevilla

Portugal

- Oporto
- Lisboa
- Coimbra

Livensa Living
Lisboa Cidade Universitária

R. Sousa Lopes, 247,
1600-131 Lisboa,
Portugal



LIKE HOME,
ONLY BETTER

living@livensaliving.com

www.livensaliving.com

FOLLOW US!



@LivensaLivingPortugal



@livensa_studenthousing_pt

Livensa Living
Lisboa Marquês de Pombal

Rua do Conde de Redondo 79,
1150-102 Lisboa
Portugal

